

Global Anatomic Pathology Solutions

Anatomic pathology has a definitive role in disease diagnosis, and is a vital component of the study and treatment of disease. With access to commercial clinical laboratories and a full in-house anatomic pathology service with a global footprint including the Americas, Europe, Asia-Pac and China, as well as a lab operations team who are adept at assay transfer and validation, we have the ability to support your unique study needs. We deliver on our customer promise of improving human health through innovation that transforms science and data into actionable medical insights by offering tailored solutions, by providing delivery excellence, and by bringing together our knowledge and expertise to help you make better decisions and shape better outcomes.

Q^{2SM} Tailored solutions

We offer tailored anatomic pathology solutions and adjunct molecular services to advance your clinical trial studies, including:

Co-localized AP, IHC/ISH, tissue molecular testing capabilities

Assay transfer and validation capabilities

Remote digital pathology (telepathology) services

Redundant labs for business continuity & management of peak volumes

Companion diagnostic experience with solid relationships with manufacturers

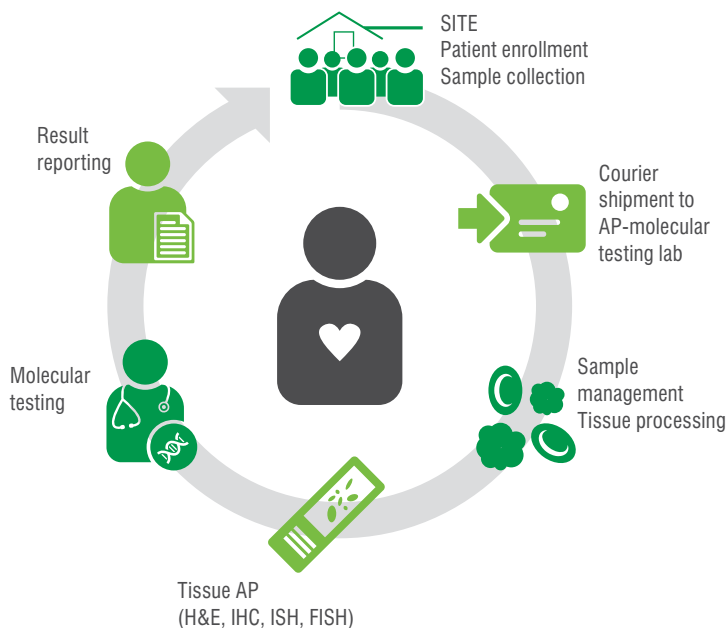
Anatomic pathology expertise

- Q^{2SM} Centralized study setup with flexible database configuration
- Tissuesample accessioning and processing
- Q^{2SM} Licensed histo-technologists
- >25 expert pathologists covering a broad range of specialties, who can provide scientific oversight as principal investigator
- Robust process for Path Report Form (e-PRF) entry and result reporting
- Ability to meet tight turnaround time
- Q^{2SM} Laboratories participate in accuracy-driven CAP Proficiency Testing to ensure high quality results

Digital pathology expertise

- Automated scoring
- Slide scanning
- Remote pathology review
- Global proficiency testing
- Supported >130 Phase I-III clinical trials for scanning of H&E and IHC slides

We use these services and innovative technologies to consistently put patients first:



Experience across all major therapeutic areas

30% of the >3,300 studies

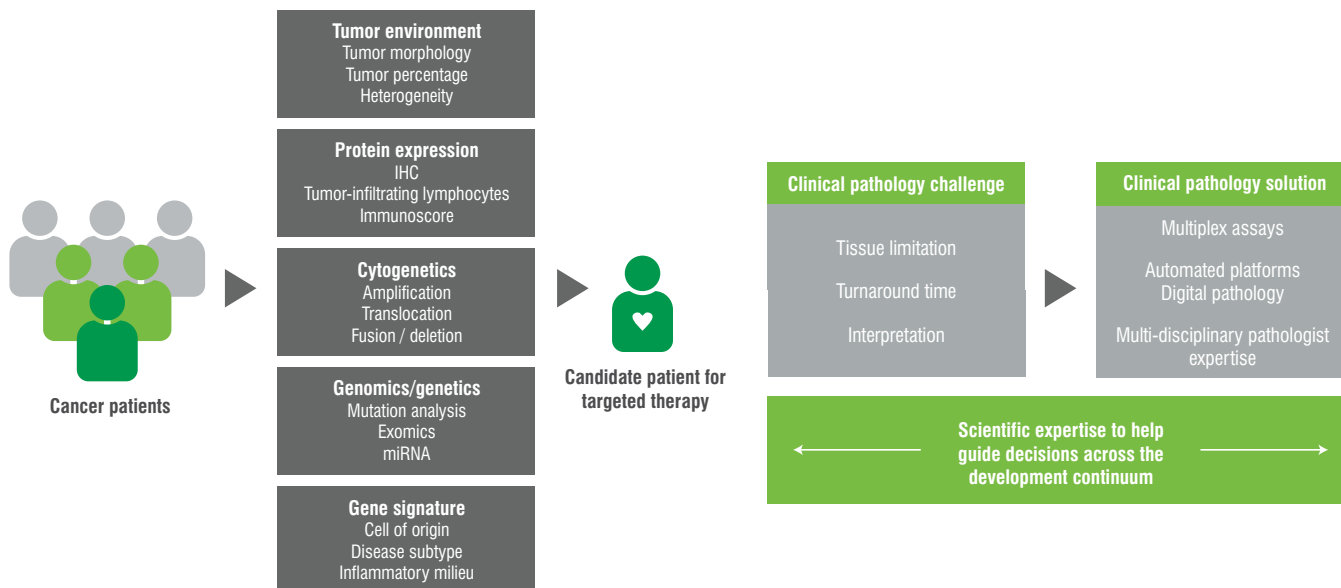
Q² Solutions conducted over the past 5 years were in oncology and hematology

Delivery excellence

With 227 anatomic pathology and >100 companion diagnostic engagements, we offer a quality management system that delivers high quality, dependable data for customers' studies and supports our goal of providing best-in-class levels of delivery excellence.

Driving advancements in immuno-oncology through anatomic pathology innovations

We provide customized laboratory solutions specifically suited for the unique combinations of therapeutic indication and targeted mechanism-of-action driving modern oncology drug development, including co-development and commercialization of drugs with complex diagnostic paradigms:



Shaping outcomes

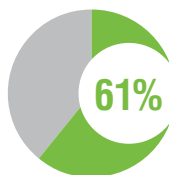
We have the breadth and depth of scientific experience and expertise across all major therapeutic areas to help drug developers optimize outcomes and ensure success in clinical trials, regulatory approvals and new product launches.

In 2016, Q² Solutions helped develop:

32% of all FDA-approved breakthrough drugs

50% of all precision medicine drugs

93% of the top 30 best-selling oncology drugs



Q² Solutions has helped develop 61% of all **FDA-approved oncology pharmacogenomics** drugs to date

>3,300 laboratory studies conducted since 2011

>350 AP studies in 2017*

>750 assays validated in last two years

Validated **>60** assays to the field of IHC-FISH-ISH

*Data as of September 2017



Contact us today to learn more about how Q²SM **anatomic pathology services** can advance your drug development programs.

Contact us

Toll free: 1 855.277.9929
Direct: +1 919.998.7000
International: +44 (0) 1506 814000
Website: www.Q2LabSolutions.com

